



Fox Elevators™

# SKYHIGH

Passenger Elevator series

9001:2008  
**ISO**  
CERTIFIED

18001:2007  
**OHSAS**  
Occupational Health & Safety  
Advisory Services

[www.foxelevators.com](http://www.foxelevators.com)



Urbanization is on the increase with more people moving to cities. This creates a need for taller buildings with even more efficient and innovative mobility solution which **SkyHigh** serves you.

- Aerodynamic car design
- upto 32 Pole Gearless PMSM Motor
- IP 51 rated controller
- Galvanised Steel ropes
- upto 2 Hours Fire resistance



**Speed**

1.5 - 6.0 meter/second



**Height capacity**

upto 64 floors



**Power Saving**

upto 30%





## Solid Performance

The SkyHigh was designed to meet Indian standards of precision reliability is built in. Enjoy worry-free operation day in and day out.



## Space Efficiency

A larger car for standard-sized shafts. Smaller technical components allow roomier car dimensions and more personal space for passengers.



## Green Mobility

Engineered to be energy efficient and eco-friendly. A quieter ride means less noise pollution as well. When the lifts are in Group control mode, the lifts go to sleep mode as the usage goes down, and becomes active as soon as flow is felt high.



## Choice of Design

Choose an interior style from our ready-made décor lines or create your own. Either way, it's a perfect match.



## Intelligent Technology

With upto 6 m/s speed, Internet based Lift Monitoring System, Overload with Pre-Torque system, Progressive type safety gear, Advance Pre opening doors, Auto Floor Park, Sleep Mode, that's all the new generation SkyHigh has got.



**Low Noise**  
Vibration-Less



**Low Maintenance**  
Less Breakdowns



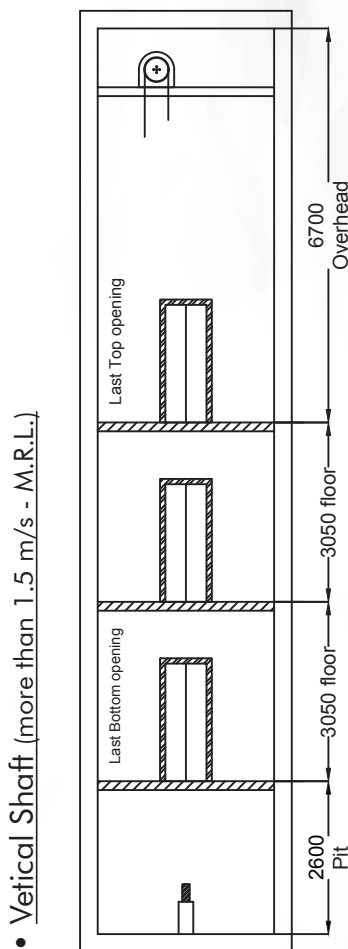
**Safety First**  
Quality Rides

## Salient Features

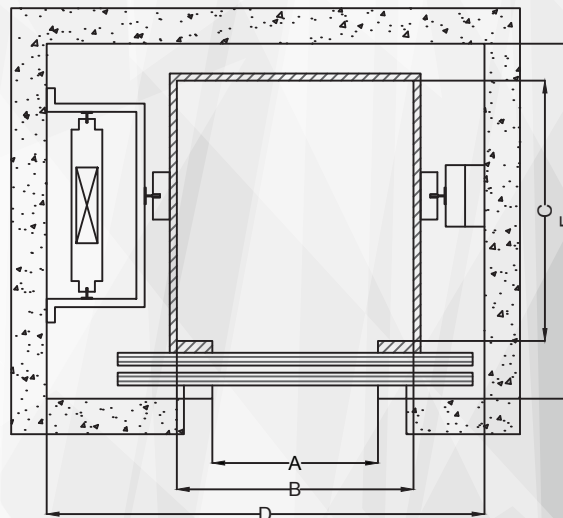
- Elevator Access Control System
- Anti Nuisance Car call protection
- Overload sensing with Pre-Torque
- Automatic Rescue Device
- Upto 8 lifts Group control
- Serial Communication

- Lift Monitoring System
- Advanced Pre-opening doors
- Overvoltage & Overcurrent Protection
- Parking & Sleep Mode function
- Feather Touch COP-LOP
- Full Collective control operation

### • Shaft Planner:



### • Hoistway Plan



Passenger	Load	Entrance (A)	Car inside width (mm) (B)	Car inside depth (mm) (C)	Shaft width (D)	Shaft depth (E)
4	272	700	770	1000	1600	1450
6	408	700	1000	1100	1750	1600
8	544	800	1100	1300	1850	1800
10	680	800	1200	1450	2100	2000
13	884	900	1400	1500	2350	2300
16	1088	900	1500	1700	2500	2500
20	1360	1000	1600	1900	2800	2800